



STRATA



# STRATA

CSISOUNDCORE®

## INTRODUCTION



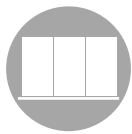
Strata is about style, atmosphere and effective noise reduction. These precision-cut, complex geometric features make an immediate impact whether they're muting echoes in a high lobby ceiling, or keeping the conversation crystal clear while suspended over a conference table.

# STRATA

CSISOUNDCORE®

## SPECIFICATIONS

<b>CONTENT</b>	Soundcore® acoustic felt
<b>NRC RATING</b>	0.45-0.9 NRC depending on installation
<b>SIZING</b>	Custom Sizing Available
<b>WEIGHT</b>	Varies by design; 0.5-1 lb / ft <sup>2</sup>
<b>COLORS</b>	16 premier colorways
<b>INSTALLATION</b>	CSI Ceiling Suspension System
<b>FIRE RATING</b>	ASTM E84, Class-A Fire Rated Available
<b>ENVIRONMENTAL</b>	Contributes to LEED v4 Credits
<b>MAINTENANCE</b>	Vacuum to remove dust Clean spills with clean damp cloth, soap, water. Carpet and fabric cleaners. Always test on hidden areas first.



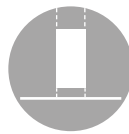
Wall Mounted



Ceiling Mounted



Ceiling Suspended



Fully Suspended



Mobile



Free Standing



Modular



Furniture Attachment

# STRATA

CSISOUNDCORE®

## FEATURES



### FIRE RATED

Class A rating, complies with ASTM E84.



### IMPACT RESISTANT

Impact resistant and shock absorbent.



### ENVIRONMENTALLY FRIENDLY

100% recyclable, VOC free, non-toxic and non-allergenic.



### DURABLE

Will not deteriorate or change color and is non-hygroscopic.



### TACKABLE

Pinnable surface with superior holding properties.



### ACOUSTICAL INSULATION

Outstanding performance in sound absorption.

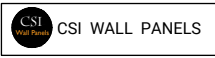
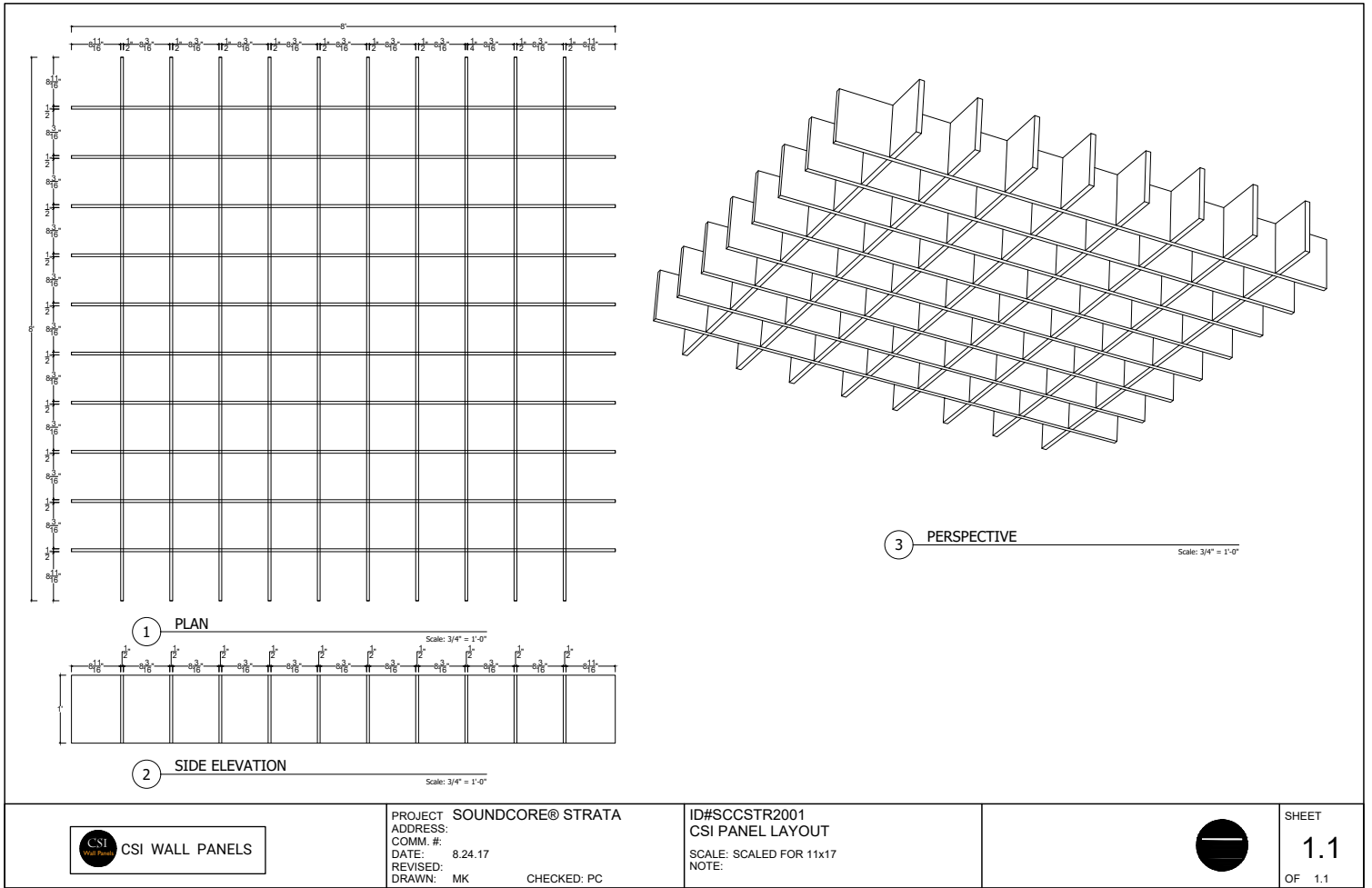
# STRATA

CSISOUNDCORE®

## ELEVATION



Ceiling  
Suspended



PROJECT SOUNDCORE® STRATA  
 ADDRESS:  
 COMM. #:  
 DATE: 8.24.17  
 REVISED:  
 DRAWN: MK CHECKED: PC

ID#SCGSTR001  
 CSI PANEL LAYOUT  
 SCALE: SCALED FOR 11x17  
 NOTE:



SHEET  
**1.1**  
 OF 1.1



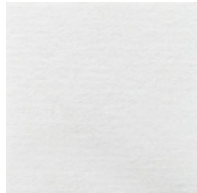
# STRATA

CSISOUNDCORE®

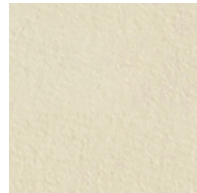
## COLORWAYS



**SND102**  
Morning Fog



**SND019**  
Linen



**SND037**  
Paper



**SND109**  
Macadamia



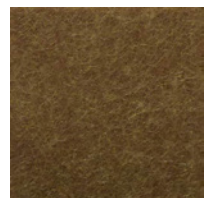
**SND034**  
Granite Peak



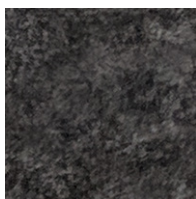
**SND110**  
Starry Night



**SND105**  
Sand Dollar



**SND310**  
Verdant



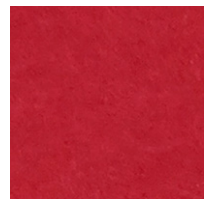
**SND103**  
Storm Cloud



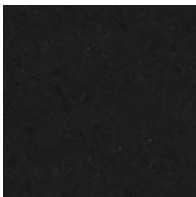
**SND042**  
Denim



**SND106**  
Goldfinch



**SND108**  
Ablaze



**SND038**  
Inkwell



**SND101**  
Commodore



**SND104**  
Pumpkin



**SND107**  
Grasshopper