

FIN



FIN

CSISOUNDCORE®

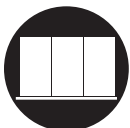
INTRODUCTION



Fin is a bold and powerful collection of noise-reducing wall features that extend perpendicular from your existing walls, maximizing material surface area for next-level NRC performance and proud, striking aesthetics.

SPECIFICATIONS

CONTENT	Soundcore® acoustic felt
NRC RATING	0.45-0.9 NRC depending on installation
SIZING	Custom Sizing Available
WEIGHT	Varies by design; 0.5-1 lb / ft ²
COLORS	16 premier colorways
INSTALLATION	Silicon-based construction adhesive, screws, nails, stand offs, CSI Clip Attachment System
FIRE RATING	ASTM E84, Class-A Fire Rated Available
ENVIRONMENTAL	Contributes to LEED v4 Credits
MAINTENANCE	Vacuum to remove dust Clean spills with clean damp cloth, soap, water. Carpet and fabric cleaners. Always test on hidden areas first.



Wall Mounted



Ceiling Mounted



Ceiling Suspended



Fully Suspended



Mobile



Free Standing



Modular



Furniture Attachment

FIN

CSISOUNDCORE®

FEATURES



FIRE RATED

Class A rating, complies with ASTM E84.



IMPACT RESISTANT

Impact resistant and shock absorbent.



ENVIRONMENTALLY FRIENDLY

100% recyclable, VOC free, non-toxic and non-allergenic.



DURABLE

Will not deteriorate or change color and is non-hygroscopic.



TACKABLE

Pinnable surface with superior holding properties.



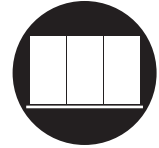
ACOUSTICAL INSULATION

Outstanding performance in sound absorption.

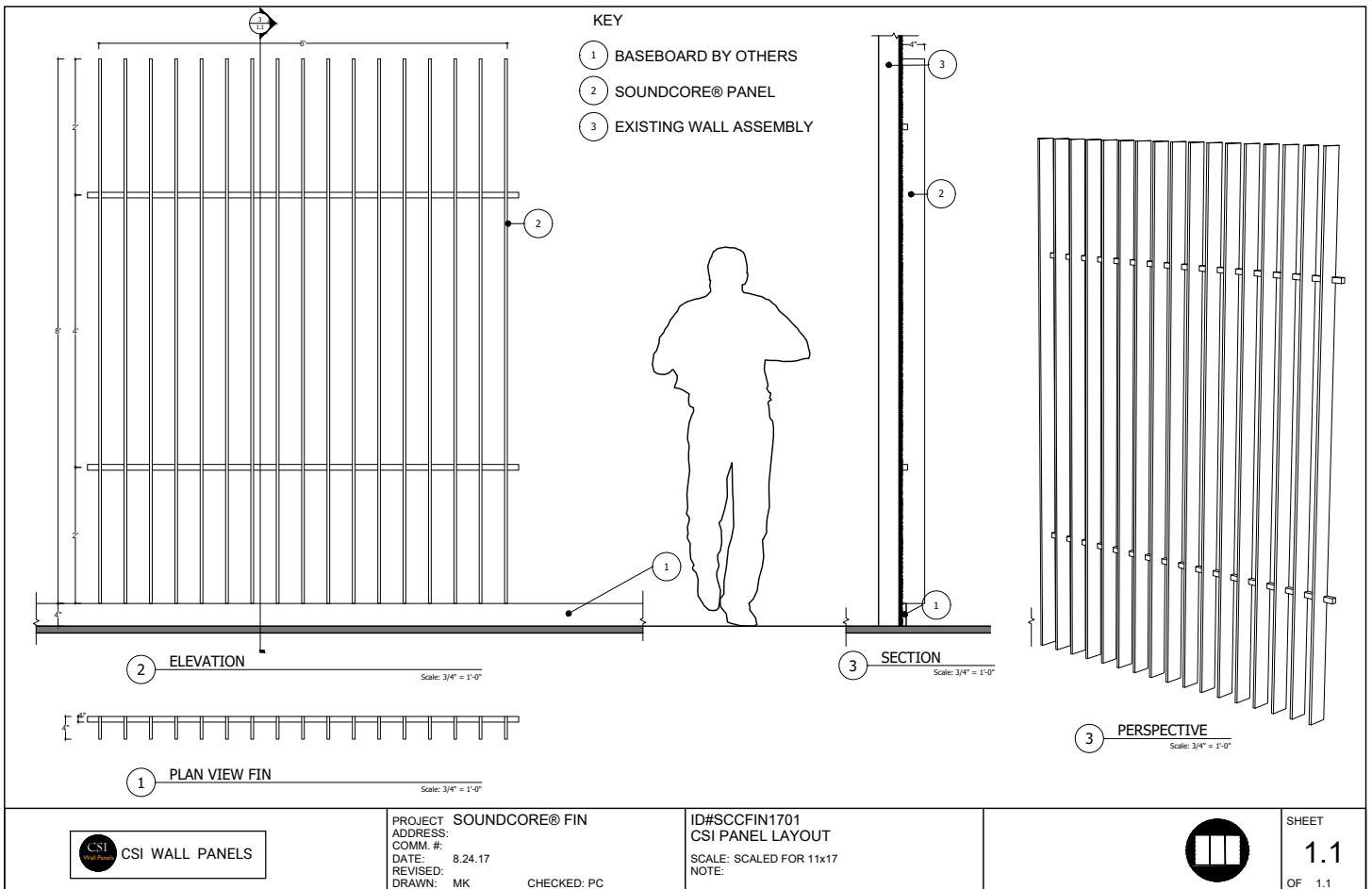
FIN

CSISOUNDCORE®

ELEVATION



Wall Mounted



PROJECT: SOUNDCORE® FIN
 ADDRESS:
 COMM. #: 8.24.17
 DATE:
 REVISED:
 DRAWN: MK CHECKED: PC

ID#SCCFIN1701
 CSI PANEL LAYOUT
 SCALE: SCALED FOR 11x17
 NOTE:



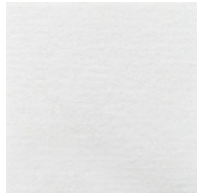
SHEET
1.1
 OF 1.1



COLORWAYS



SND102
Morning Fog



SND019
Linen



SND037
Paper



SND109
Macadamia



SND034
Granite Peak



SND110
Starry Night



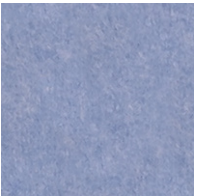
SND105
Sand Dollar



SND310
Verdant



SND103
Storm Cloud



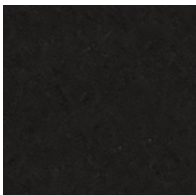
SND042
Denim



SND106
Goldfinch



SND108
Ablaze



SND038
Inkwell



SND101
Commodore



SND104
Pumpkin



SND107
Grasshopper